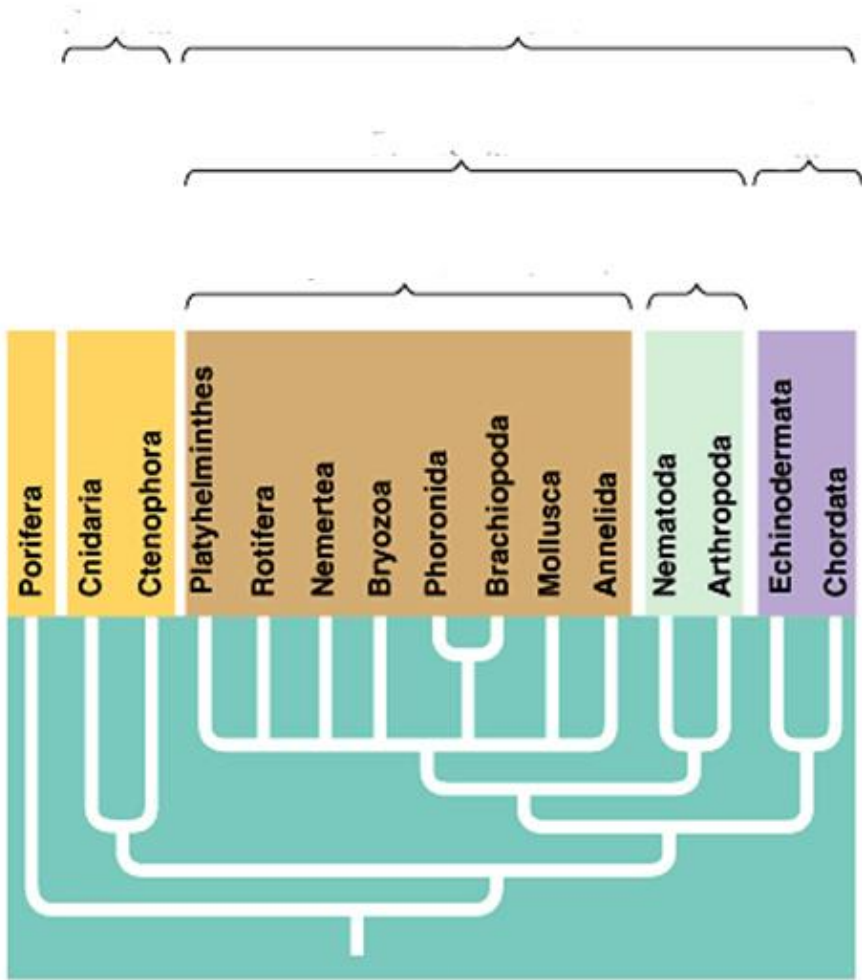
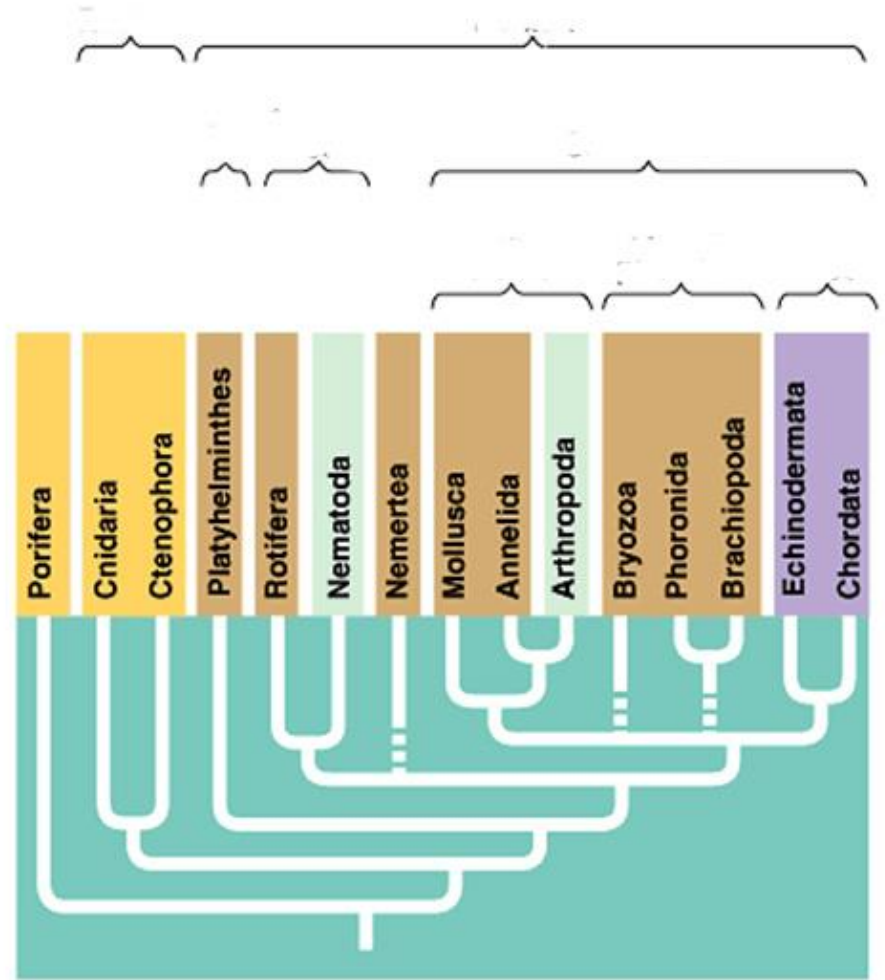


Name Class M.6/ No.

- (A) Radial, (B) Bilateral, (C) Protostomes, (D) Deuterostomes, (E) Lophotrochozoans, (F) Ecdysozoans, (G) Acoelomates, (H) Pseudocoelomates, (I) Coelomates, (J) Lophophorates



(a) Tree based on molecular comparisons



(b) Tree based on body-plan grades